

DEWALT



**CONSTRUCTION
TECHNOLOGY™**

CASE STUDY: EVOLUTION BIM SCALING PRECISION WITH MSUITE



SUITE



We've seen the benefits of using experienced field personnel for modeling and coordination. It results in faster, more accurate deliverables and designs that truly reflect how installations happen in the field."

BRIAN UNDERWOOD

Founder
EvolutionBIM LLC



EVOLUTIONBIM SETS A NEW STANDARD IN **DIGITAL CONSTRUCTION** WITH MSUITE

A DEWALT® CASE STUDY

- **COMPANY:** EvolutionBIM, LLC
- **INDUSTRY:** MEP
- **LOCATIONS:** Southern California
- **KEY CONTACT:** Brian Underwood, Founder



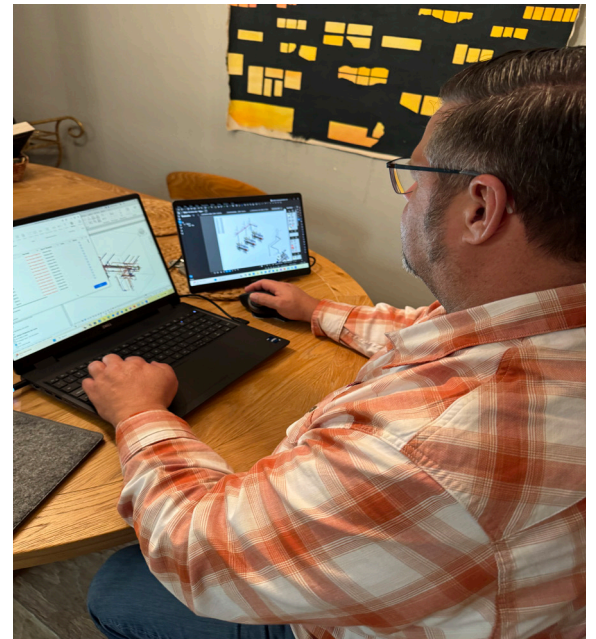


OVERVIEW

Founded in 2022, **EvolutionBIM** is a specialized Building Information Modeling (BIM) services firm supporting fabricators lacking BIM and VDC bandwidth across the United States. The company was founded by Brian Underwood and Chad Demick, two long-time collaborators and now business partners, who saw an opportunity to provide expert BIM modeling and coordination as an outsourced partner to MEP contractors managing overflow work. In this customer success story, Mr. Underwood shares how MSUITE is helping EvolutionBIM reach new heights.

THE RESULT?

Faster, more accurate deliverables and designs for easier field installation.



BUSINESS FOCUS & DIFFERENTIATORS

EvolutionBIM acts as an extension of their clients' BIM departments, providing overflow modeling support, constructability insight, and turnkey deliverables including models, spools, hangers, and layout points. Projects span data centers, hospitals, food processing plants, college campuses, and museums.

INDUSTRY TRENDS

EvolutionBIM's partnerships reveal key trends shaping the future of BIM and fabrication. Contractors are adopting robotic layout tools, strengthening their use of fabrication-ready modeling, and increasing reliance on prefabricated wall systems. At the same time, **firms are turning to outsourced BIM services** as labor shortages and rising project volume create demand for additional modeling support. Hanger automation through MSUITE Hangers remains a major driver of efficiency, helping contractors keep fabrication workflows moving even when internal VDC teams are stretched thin.

MSUITE: POWERING GROWTH AND EFFICIENCY

MSUITE's integrated suite of design tools - **Spooling Automation** and **MSUITE Hangers** has been a cornerstone of EvolutionBIM's growth and day-to-day operations. The platform delivers the speed, precision, and automation that modern mechanical modeling demands.

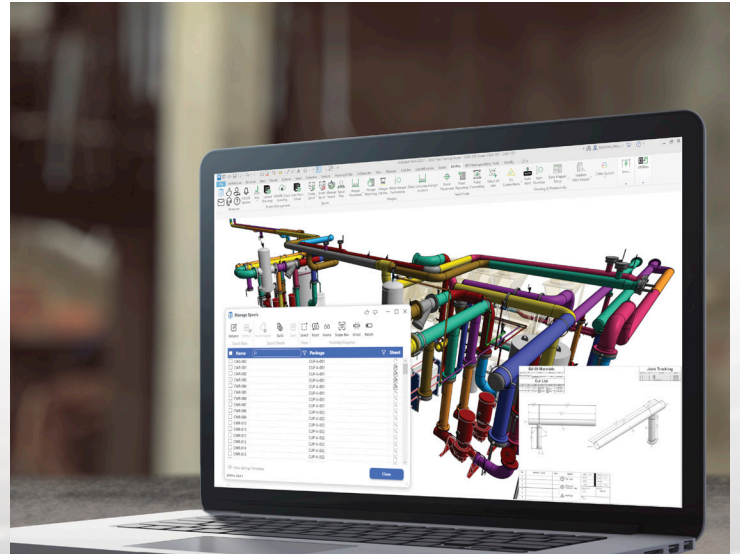
“I’ve been using MSUITE for about ten years and seen it evolve from a solid modeling companion into an essential part of our workflow. It’s reliable, flexible, and built for how fabricators and modelers actually work.”

BRIAN UNDERWOOD

Founder
EvolutionBIM, LLC.

GAIN EFFICIENCY: FROM DESIGN TO FAB

For Underwood and his team, MSuite's Revit® Plug-In BIM tool streamlines navigation, automates parameters, and accelerates spooling, providing capabilities that keep projects moving efficiently from design to fabrication.



KEY RESULTS

■ **INCREASED PRODUCTIVITY**

Helps EvolutionBIM take on more work and still maintain the highest quality for clients.

■ **AUTOMATION**

Manual steps for spooling, Hangers, point exports, models were replaced with automated workflows.

■ **RELIABILITY**

MSuite is reliable, flexible, and built for how fabricators and modelers actually work.

■ **LONG-TERM PARTNERSHIP**

MSuite's customer-driven development approach relies on customer feedback

“MSuite BIM helps us navigate models, automate parameters, and handle spooling needs fast. It's been fundamental to our success.”

BRIAN UNDERWOOD

Founder
EvolutionBIM, LLC.

MSUITE'S GAME-CHANGING FEATURES



DRIVING PRODUCTIVITY & STREAMLINED WORKFLOWS

- **ROTATE ELEMENTS:** Precision and control over model adjustments
- **REMOVE STRAIGHT:** Simplifies piping/conduit modifications
- **AUTO SPOOL:** Rapidly create assemblies
- **HANGER PLACEMENT:** Properly place hangers throughout model



Once MSUITE BIM was implemented, productivity surged and project delivery accelerated.”

BRIAN UNDERWOOD

Founder, EvolutionBIM, LLC



SUBSTANTIAL TIME SAVINGS ON EVERY HANGER PLACEMENT

Previously, hanger placement required multiple adjustments and manual coordination. MSUITE streamlined this process into a single automated step, dramatically improving accuracy and efficiency.



MSUITE Hangers has been a cornerstone of our growth and operations.”

BRIAN UNDERWOOD

Founder, Evolution BIM, LLC



REVOLUTIONIZING FABRICATION TRACKING

- **ELIMINATED SCATTERED SPREADSHEETS** by centralizing work orders
- **ENABLED REAL-TIME STATUS UPDATES** making them accessible to all teams
- **PROVIDED INSTANT VISIBILITY INTO BOTTLENECKS** for faster decision-making



I've been using MSUITE for about 10 years and it's an essential part of our workflow. It's flexible, and built for how fabricators and modelers actually work.”

BRIAN UNDERWOOD

Founder, EvolutionBIM, LLC



MSUITE ELEVATE SUMMIT

Underwood attended the MSUITE Elevate Summit, where he presented and networked with industry peers. He described the event as transformative for both professional growth and business development, generating multiple new project opportunities.



“The biggest takeaway was networking. Meeting other users, sharing solutions to problems, and hearing their success stories was invaluable. The Summit reinforces that community.”

BRIAN UNDERWOOD

LOOKING AHEAD

EvolutionBIM plans to expand into electrical modeling and introduce laser scanning for as-built and pre-construction verification, furthering their role as a multi-trade coordination partner.

EvolutionBIM exemplifies the new generation of digital construction partners that are agile, specialized, and empowered by technology like MSUITE. Through smart workflows and community collaboration, they are setting a new standard for digital construction excellence.

“The industry is calling for smarter solutions — and tools like MSUITE Hangers are answering that call.”

BRIAN UNDERWOOD

Founder
EvolutonBIM, LLC





SCAN TO
LEARN MORE



Headquartered in Southern California, EvolutionBIM operates as a union BIM contractor, employing experienced members from SMART (Sheet Metal Workers) and the UA (United Association of Plumbers and Pipefitters). Their staff includes seven U.S.-based specialists: three Sheet Metal Detailers, two Plumbing detailers, three Mechanical Pipe Detailers, one Document Control Specialist, and one Office Administrator. This mix of field-experienced professionals allows EvolutionBIM to bring a hands-on, installer-first mindset to digital coordination. Being union allows EvolutionBIM to scale from a vetted pool of BIM Detailers with real world experience. Visit their website: www.evolutionBIM.com

See why millions of professionals choose DEWALT®. From our rich history and proven performance to our focus on innovation and technology. DEWALT® continues to design and optimize professional jobsite solutions—tools, accessories and service—to ensure absolute confidence for the toughest conditions.