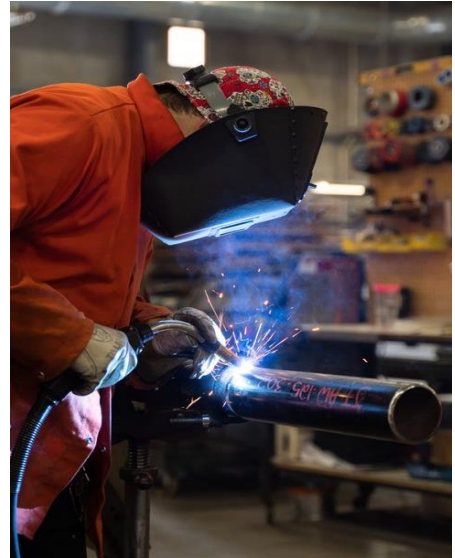
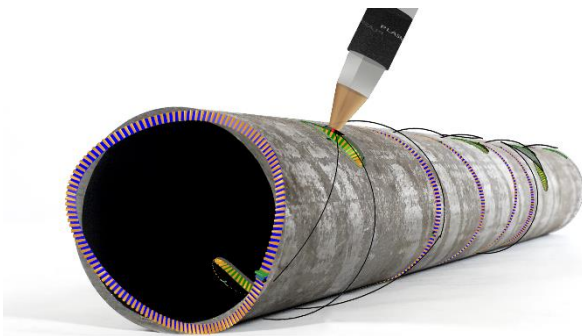






FabPro integration with PypeServer

Welcome to the digital fabrication shop.

Eliminate machine programming and automate real-time production and material logistics direct from the floor. The PypeServer integration with FabPro takes fabrication shops to the next level.



INTEGRATION HIGHLIGHTS

-  **Eliminate Manual Processes**
Spools staged from FabPro automatically appear in PypeServer without the need for manual export/import increasing labor productivity.
-  **2-Way Data Transfer**
During the data handoff from FabPro to PypeServer, custom FabPro data fields can be mapped to corresponding fields in PypeServer to preserve all relevant part information in the PypeServer database.
-  **Superior Manufacturability**
After handoff, PypeServer gives the shop the opportunity to add root gaps and tweak designs for manufacturability. Nesting can be adjusted to account for pipe defects and to minimize material waste.
-  **End-to-End Process Optimization**
Once the parts are cut, PypeServer automatically reports process timing data upstream to FabPro to allow end-to-end process optimization. Handle change orders gracefully at any point in the process.

TRACK | MANAGE | SHARE